

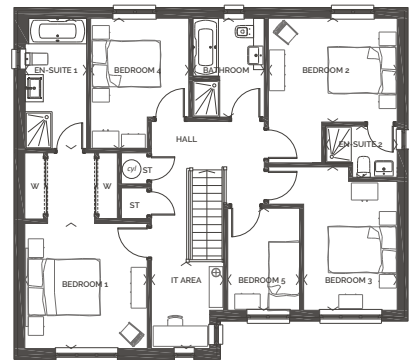


## Roslin

5 bedroom detached home with double garage

ROOM	METRIC (W x D)	ROOM IMPERIAL (W x D)
Living Room	3.70 x 5.04	12' 2" x 16' 6"
Kitchen	3.10 x 3.48	10' 2" x 11' 5"
Dining/Family Area	5.97 x 3.08	19' 7" x 10' 2"
Utility	1.75 x 3.54	5' 9" x 11' 7"
Bedroom 1	3.60 x 3.68	11' 10" x 12' 1"
En Suite 1	1.80 x 3.83	5' 11" x 12' 7"
Bedroom 2	3.78 x 3.05	12' 5" x 10' 0"
En Suite 2	2.10 x 1.50	6' 11" x 4' 11"
Bedroom 3	2.75 x 4.21	9' 0" x 13' 10"
Bedroom 4	2.11 x 3.00	9' 6" x 12' 7"
Bedroom 5	2.07 x 3.11	6' 11" x 9' 10"
Bathroom	2.10 x 2.90	6' 11" x 9' 6"
IT Area	2.12 x 2.53	7' 0" x 8' 4"
<b>Total Floor Area</b>	<b>174.45m<sup>2</sup></b>	<b>1877ft<sup>2</sup></b>

FIRST FLOOR



GROUND FLOOR

