

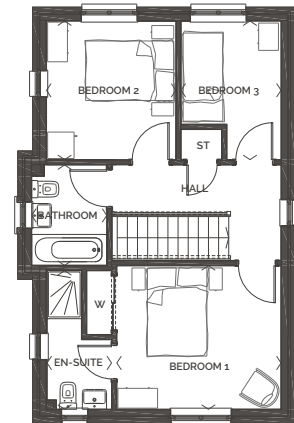


## Corringham

3 bedroom detached home with detached single garage

ROOM	METRIC (W x D)	ROOM IMPERIAL (W x D)
Living room	5.32m x 3.24m	17' 6" x 10' 8"
Kitchen/Dining	5.32m x 3.64m	17' 6" x 11' 11"
Utility Room	1.51m x 1.66m	5' 0" x 5' 5"
Bedroom 1	3.72m x 3.25m	12' 3" x 10' 8"
En-Suite 1	1.47m x 3.14m	4'10" x 10' 4"
Bedroom 2	2.93m x 3.14m	9' 7" x 10' 4"
Bedroom 3	2.26m x 3.14m	7' 5" x 10' 4"
Bathroom	1.70m x 2.28m	5' 7" x 7' 6"
Total Floor Area	95.32	1026 ft <sup>2</sup>

FIRST FLOOR



GROUND FLOOR

