

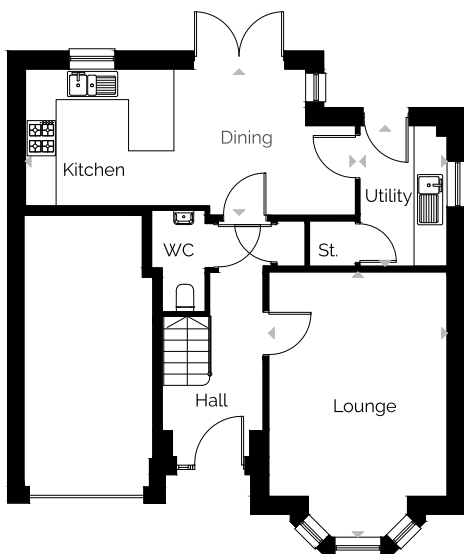


## Crawford

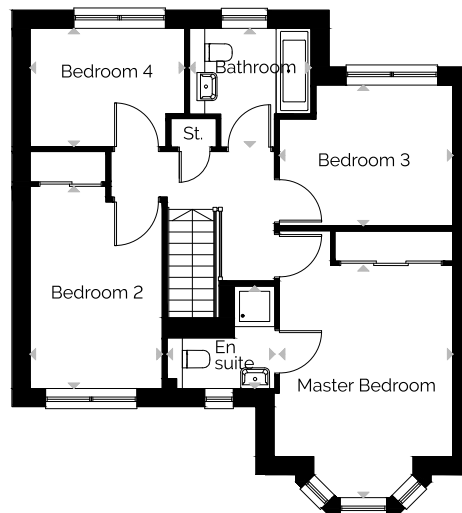
4 bedroom detached home with a single garage

ROOM	M	FT
Lounge	5.27 x 3.54	17'3" x 11'7"
Kitchen/Dining	6.56 x 2.71	21'6" x 8'11"
Utility	2.79 x 1.73	9'2" x 5'8"
Master Bedroom	4.60 x 3.43	15'1" x 11'3"
En suite	2.13 x 2.30	6'8" x 6'0"
Bedroom 2	4.01 x 2.61	13'2" x 8'7"
Bedroom 3	3.44 x 2.79	11'3" x 9'2"
Bedroom 4	3.06 x 2.34	10'0" x 7'8"
Bathroom	2.40 x 2.35	7'10" x 7'9"
<b>Total Floor Area</b>	<b>114.91m<sup>2</sup></b>	<b>1239ft<sup>2</sup></b>

### GROUND FLOOR



### FIRST FLOOR



# DUNDAS

Please note that some properties are built handed (mirror image) to those illustrated. These floor plans depict a typical layout of the house type. All dimensions are approximate and floor plans are not to scale. Computer generated images. Individual features and elevational treatments may vary. Please ask the Sales Negotiator for details of your chosen plot.

**DUNDAS**

**Crawford**  
Floorplans

Discover more at [dundas.co.uk](https://www.dundas.co.uk)