

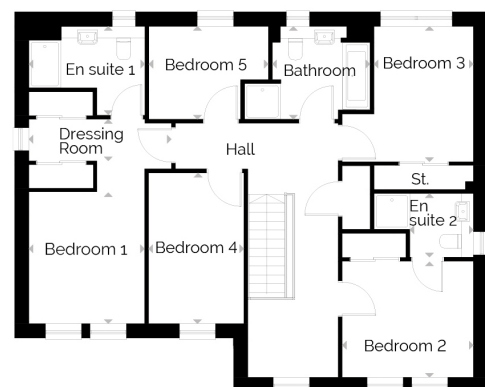


McArthur

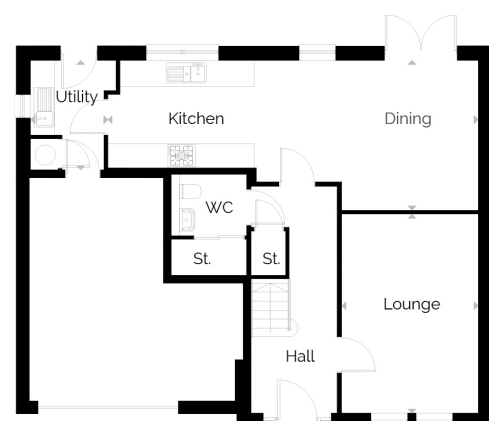
- 5 generous bedrooms - two with en suite
- Light and spacious kitchen/dining area
- Single integral garage with bike store
- Spacious lounge

ROOM	METRIC (W x D)	ROOM IMPERIAL (W x D)
Lounge	3.41 x 4.98	11'2" x 16'4"
Kitchen/Dining	9.26 x 3.75	30'5" x 12'4"
Utility	1.83 x 2.74	6'0" x 8'0"
Bedroom 1	2.91 x 3.31	9'7" x 10'10"
En Suite 1	2.92 x 2.23	9'7" x 7'4"
Bedroom 2	3.30 x 2.92	10'10" x 9'7"
En Suite 2	2.50 x 1.60	8'2" x 5'3"
Bedroom 3	2.50 x 3.40	8'2" x 11'2"
Bedroom 4	2.40 x 3.79	7'10" x 12'5"
Bedroom 5	3.01 x 2.33	9'11" x 7'8"
Bathroom	2.45 x 2.34	8'0" x 7'8"
Total Floor Area	162 m²	1744 ft²

FIRST FLOOR



GROUND FLOOR



Here's an overview of the specification:

McArthur

*where applicable

- Gas condensing boiler with thermostatic radiator valves to most radiators
- Pressurised hot water cylinder
- Hive controllable heating system
- In roof Solar PV panels
- High performance timber external doors
- Upvc outward opening french doors to rear garden
- Multi point locking to all external doors
- Double glazed tilt & turn Upvc windows, with child restrictors*
- Luxury fitted kitchen with choice of worktop & doors
- Chrome under unit lighting to kitchen
- Cooker hood
- 5 Burner gas hob
- Double oven
- Integrated fridge freezer
- Integrated dishwasher
- Double socket with USB charging point in the lounge
- Electric shower in en suite 2
- Thermostatic chrome bar shower in main bathroom
- Thermostatic chrome bar shower to en suite 1
- Vanity unit to bathroom (with storage)
- Vanity unit to en suite 1 (with storage)
- Vanity unit to en suite 2 (with storage)
- Duo double ended bath with centre taps
- Sliding wardrobe doors to bedroom 1
- Sliding wardrobe door to other bedrooms*
- Energy efficient lighting
- TV point to lounge, bedroom 1
- BT Openreach including Superfast Broadband, with CAT 5 cable to lounge
- White Internal doors with chrome ironmongery
- Walls and ceilings painted white
- Wireless operated door bell
- Underfloor wall and roof space insulation
- Light and power to the garage
- Turfed front garden
- Pavior driveways
- 10 year NHBC warranty

DUNDAS

Disclaimer: Please note that some properties are built handed (mirror image) to those illustrated. These floor plans depict a typical layout of the house type. All dimensions are approximate and floor plans are not to scale. The computer generated images are for illustrative purposes and should be treated as general guidance only. Individual features and elevational treatments may vary. The standard specification can vary on individual developments, please speak to your Customer Experience Manager for specific specification details for your chosen development.